

FOR LEASE

Building 38 at the Main Post Presidio of San Francisco

Accepting Offers to lease
Available February 1, 2025



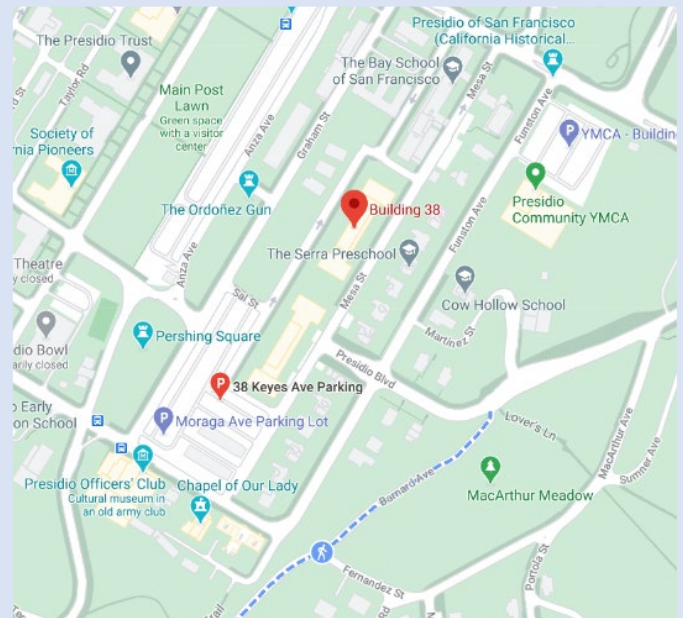
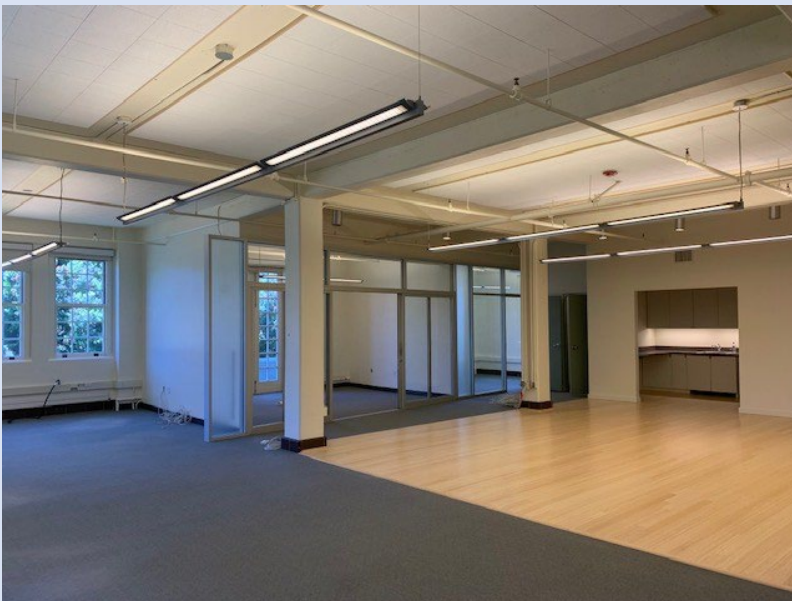
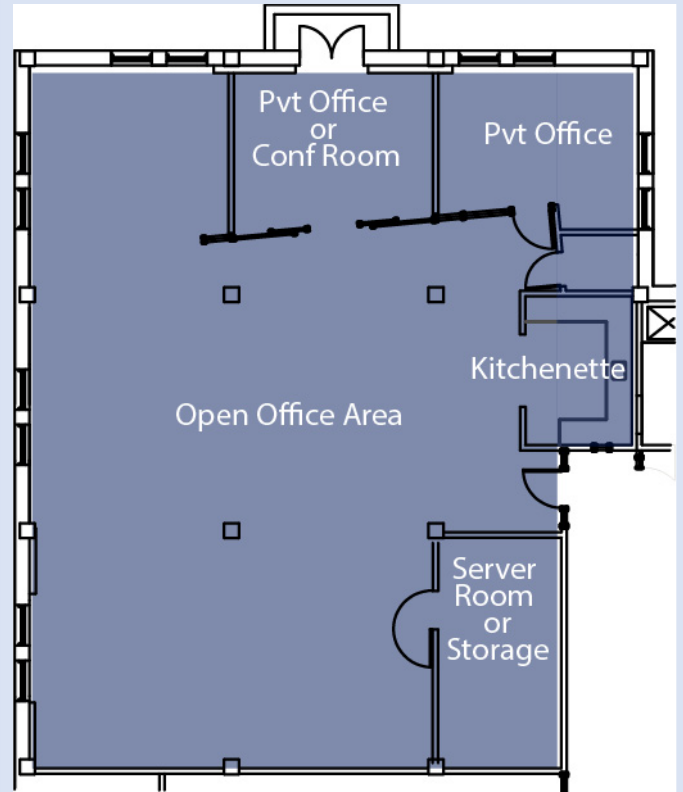
Suite 201

3,288rsf

- Two private offices/conference room
- Open floor plan
- Private kitchenette
- Server room (w/AC)
- Western views of main post
- 3 Year minimum term

Tenant expenses include: Parking, insurance, telecom and data.

Basic office utilities, janitorial and Service District Charge (SDC) are included in monthly rent in the first year of tenancy. SDC is an annual reimbursement to the Presidio Trust for a portion of municipal services such as police, fire, and emergency services, and road and other infrastructure maintenance. Tenant pays a pro rata share of any increase in building's operating expenses after first year of occupancy.



To schedule a tour, please contact:
Elana Neiner, Building 38 Property Manager
elana@ecbsf.com 415-766-8950



Kitchenette



Open Office Area

All Suites Include:

- Basic janitorial services provided daily (M-F)
- Central hydronic radiator heating system with independent controls (no A/C)
- High ceilings, operable windows, natural light and fresh air
- Mecho window shades on all windows
- Access to shared kitchenette & conference room
- Access to showers, lockers, and bicycle parking
- Bright energy efficient lighting
- Wall-to-Wall carpeting, recently cleaned
- Newly painted
- Comprehensive recycling program

Presidio tenants enjoy:

- National park environment for outdoor activities – golf, tennis, fitness, walking, hiking, biking
- Easy access to nearly completed Presidio Tunnel Tops leading to Crissy Field and Marina Green
- Ample paid parking close to the building
- Easy access to Marina District and Pacific Heights
- Public transit options include SFMUNI, Golden Gate Transit, and the free PresidiGo bus service
- Dining, Post Office, banking and lodging within walking distance



Building 38 leases commercial office space to qualifying tenants. A proposing entity must meet minimum requirements to enter into a lease with Building 38. A corporate entity must be registered with the California Secretary of State. Proof of financial wherewithal to fulfill the financial obligations in the lease is also required as lease under writing. Low traffic, low impact tenants are preferred.

Pets, emotional support animals, comfort or other therapy animals which are not considered service animals by the American Disability Act (ADA) are not allowed on premises. Service animals trained to aid a person with a specific disability per the ADA are allowed in the Presidio's commercial buildings.

Building 38 has fiber service available; however, The Presidio Trust charges an additional monthly fee of \$180 on top of what service providers charge for fiber.



To schedule a tour, please contact:
Elana Neiner, Building 38 Property Manager
elana@ecbsf.com 415-766-8950

